



BLACK CAT

WEAR PARTS



RVJ TOOTH SYSTEM



S



PP



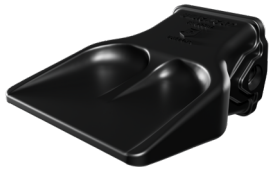
E



T



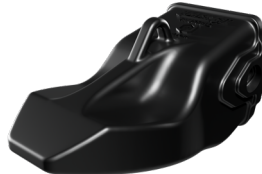
TT



F



HDAL



LD



REVOLUTION

Tooth	S	PP	E	T	TT	F	HDAL	LD	Pin	Converter
J250	RVJ250PP 6.7 lb 3.0 kg	RVJ250PP 6.8 lb 3.6 kg	-	RVJ250T 5.7 lb 2.6 kg	RVJ250TT 7.6 lb 3.4 kg	RVJ250F 8.0 lb 3.6 kg	-	RVJ250LD 11.8 lb 5.4 kg	RVJ250P	RVJPTC
J300	RVJ300S 6.8 lb 3.1 kg	RVJ300PP 10.1 lb 4.9 kg	-	RVJ300T 8.7 lb 3.9 kg	RVJ300TT 11.5 lb 5.2 kg	RVJ300F 12.0 lb 5.4 kg	-	RVJ300LD 17.6 lb 8.0 kg	RVJ300P	RVJPTC
J350	RVJ350S 12.8 lb 5.8 kg	RVJ350PP 13.7 lb 6.2 kg	RVJ350E 15.9 lb 7.2 kg	RVJ350T 11.7 lb 5.3 kg	RVJ350TT 15.4 lb 7.0 kg	RVJ350F 15.0 lb 6.8 kg	RVJ350HDAL 24.3 lb 11.0 kg	RVJ350LD 25.4 lb 11.5 kg	RVJ350P	RVJ350C
J400	RVJ400S 18.1 lb 8.2 kg	RVJ400PP 18.3 lb 8.3 kg	RVJ400E 20.3 lb 9.2 kg	RVJ400T 15.4 lb 7.0 kg	RVJ400TT 21.2 lb 9.6 kg	RVJ400F 20.3 lb 9.2 kg	RVJ400HDAL 36.8 lb 16.7 kg	RVJ400LD 34.4 lb 15.6 kg	RVJ400P	RVJ400C
J450	RVJ450S 27.3 lb 12.4 kg	RVJ450PP 30.4 lb 13.8 kg	RVJ450E 31.1 lb 14.1 kg	RVJ450T 23.8 lb 10.8 kg	RVJ450TT 30.9 lb 14.0 kg	RVJ450F 31.8 lb 14.4 kg	RVJ450HDAL 51.4 lb 23.3 kg	RVJ450LD 47.8 lb 21.7 kg	RVJ460P	RVJ460C
J550	RVJ550S 40.1 lb 18.2 kg	RVJ550PP 49.8 lb 22.6 kg	RVJ550E 47.6 lb 21.6 kg	RVJ550T 39.7 lb 18.0 kg	RVJ550TT 43.9 lb 19.9 kg	RVJ550F 45.2 lb 20.5 kg	RVJ550HDAL 71.0 lb 32.2 kg	RVJ550LD 71.7 lb 32. kg	RVJ550P	RVJ550C
J600	RVJ600S 70.1 lb 31.7 kg	RVJ600PP 93.9 lb 42.6 kg	RVJ600E 85.1 lb 38.6 kg	RVJ600T 75.4 lb 34.2 kg	RVJ600TT 85.1 lb 38.6 kg	RVJ600F 76.7 lb 34.8 kg	RVJ600HDAL 124.3 lb 56.4 kg	RVJ600LD 131.8 lb 59.8 kg	RVJ600P	RVJ600C
J700	-	RVJ700PP 119.3 lb 54.1 kg	RVJ700E 113.3 lb 51.4 kg	-	-	-	RVJ700HDAL 172.4 lb 78.2 kg	RVJ700LD 182.5 lb 82.8 kg	RVJ700P	RVJ700C
J800	-	RVJ800PP 183.9 lb 83.4 kg	RVJ800E 155.9 lb 70.7 kg	RVJ800T 119.5 lb 54.2 kg	RVJ800TT 138.0 lb 62.6 kg	-	RVJ800HDAL 223.5 lb 101.4 kg	RVJ800LD 233.7 lb 106.0 kg	RVJ800P	RVJ800C

Caterpillar® and other identities and/or trademarks referred to in this publication are the registered marks of the entities noted herein. The use of any trademarks of others than Black Cat Wear Parts Ltd. are solely and exclusively for identification, informational, comparative, and descriptive purposes. Black Cat Wear Parts Ltd. is not affiliated with any owner of such registered marks and does not make, use, or sell any products manufactured by any such entity identified in this publication.